

M. 1.

M. 2.

M. 3.

Marrorell

M. 4.

5

*Cortesia*

*Aspie*

Handwritten musical score for 'Aspie' in G major, 3/4 time. It consists of three staves. The first staff begins with a treble clef, a key signature of one sharp (F#), and a 3/4 time signature. The music is written in a cursive hand with many slurs and ornaments. The second and third staves continue the melody and accompaniment.

*Contradansa*

6

*Contradansa*

*p*

*f*

*bis*

Handwritten musical score for 'Contradansa' in G major, 2/4 time. It consists of three staves. The first staff begins with a treble clef, a key signature of one sharp (F#), and a 2/4 time signature. The music is written in a cursive hand with many slurs and ornaments. The second and third staves continue the melody and accompaniment. Dynamic markings 'p' and 'f' are present, along with a 'bis' marking.

*M. 8*

Handwritten musical score for 'M. 8' in G major, 3/4 time. It consists of two staves. The first staff begins with a treble clef, a key signature of one sharp (F#), and a 3/4 time signature. The music is written in a cursive hand with many slurs and ornaments. The second staff continues the melody and accompaniment.

*M. 9*

Handwritten musical score for 'M. 9' in G major, 3/4 time. It consists of two staves. The first staff begins with a treble clef, a key signature of one sharp (F#), and a 3/4 time signature. The music is written in a cursive hand with many slurs and ornaments. The second staff continues the melody and accompaniment. There are some handwritten notes below the second staff, possibly 'bis'.

Vizinos a la pantenza:

10. *Marpa*

11. *Sigadilla*

12. *Paspie*

13. *Contrada de totas*

Paspie 14

Handwritten musical notation for Paspie 14, measures 1-2. The first staff is in 3/4 time with a treble clef and a key signature of one flat. The second staff continues the melody with a similar time signature and clef.

M. 15

Handwritten musical notation for M. 15, measures 1-2. The first staff is in 3/4 time with a treble clef and a key signature of one flat. The second staff continues the melody with a similar time signature and clef.

Paspie 16

Handwritten musical notation for Paspie 16, measures 1-2. The first staff is in 3/4 time with a treble clef and a key signature of one flat. The second staff continues the melody with a similar time signature and clef.

M. 17

Handwritten musical notation for M. 17, measures 1-2. The first staff is in 3/4 time with a treble clef and a key signature of one flat. The second staff continues the melody with a similar time signature and clef.

M. 18

Handwritten musical notation for M. 18, measures 1-2. The first staff is in 3/4 time with a treble clef and a key signature of one flat. The second staff continues the melody with a similar time signature and clef.

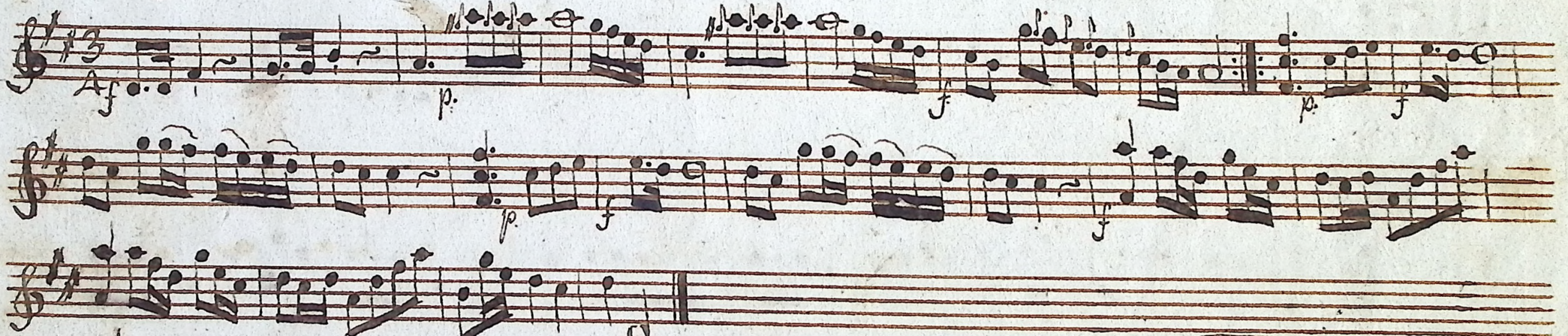
19.11



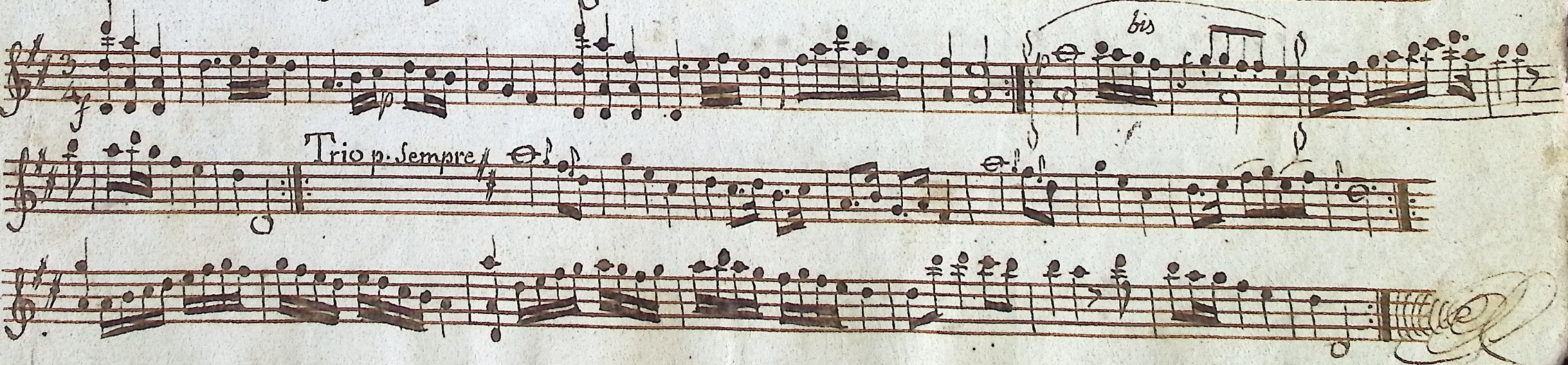
M. 19



M. 20



M. 21



M. 22.

Handwritten musical score for measures 22-23. The first system (measures 22-23) includes dynamic markings like 'f', 'p', and 'pp'. The second system (measures 24-25) ends with a double bar line and a large, decorative flourish.

M. 23.

Handwritten musical score for measures 23-25. The first system (measures 23-24) includes dynamic markings like 'f' and 'p'. The second system (measures 25-26) ends with a double bar line and a large, decorative flourish.

M. 24.

Handwritten musical score for measures 24-25. The first system (measures 24-25) includes dynamic markings like 'p' and 'f'. The second system (measures 26-27) ends with a double bar line.

25 M.

Handwritten musical score for measures 25-26. The first system (measures 25-26) includes dynamic markings like 'f' and 'p'. The second system (measures 27-28) ends with a double bar line.

26 M

Handwritten musical notation for measures 26 and 27. The notation is written on five-line staves with a treble clef and a key signature of one sharp (F#). The music consists of a single melodic line with various rhythmic values, including eighth and sixteenth notes, and rests. There are repeat signs and a 'Memory' marking above the second staff.

27 Marpo.

Handwritten musical notation for measure 27. The notation is written on five-line staves with a treble clef and a key signature of one sharp (F#). The music continues the melodic line from the previous measures, ending with a double bar line and a repeat sign.

Duo

Handwritten musical notation for a duo section. It consists of two staves with treble clefs and a key signature of one sharp (F#). The notation includes dynamic markings such as *f* (forte), *p* (piano), and *fine*. The music is more complex, featuring sixteenth-note patterns and slurs.

D.C.

Handwritten musical notation at the bottom of the page. It consists of a single staff with a treble clef and a key signature of one sharp (F#). The notation includes a double bar line and the marking 'D.C.' (Da Capo). Below this staff are three empty staves.

Duo 2.<sup>o</sup>

Handwritten musical notation for Duo 2.0, consisting of four staves of music in treble clef with a 6/8 time signature. The notation includes various note values, rests, and slurs.

Duo 3.<sup>o</sup>

Handwritten musical notation for Duo 3.0, consisting of three staves of music in treble clef with a 6/8 time signature. It includes performance markings such as "D.C.", "Appetoso", and "fine".

Duo 1.<sup>o</sup>

Handwritten musical notation for Duo 1.0, consisting of two staves of music in treble clef with a 6/8 time signature. It includes performance markings such as "D.C.". Below the notation are several empty staves.

Solt's Subito.



Duo 50 Minuetto.

Handwritten musical score for Duo 50 Minuetto, measures 1-10. The score is written on five staves. The first staff begins with a treble clef, a key signature of one flat (B-flat), and a 3/4 time signature. The music consists of eighth and sixteenth notes, with various rests and accidentals. The notation is dense and characteristic of 18th-century manuscript style.

Duo 6 Pleyel

Spiritoso

*fine*

Handwritten musical score for Duo 6 Pleyel, measures 1-10. The score is written on five staves. The first staff begins with a treble clef, a key signature of one flat (B-flat), and a 3/4 time signature. The tempo marking "Spiritoso" is written above the first staff. The music features a mix of eighth and sixteenth notes. The word "fine" is written below the second staff. The notation is dense and characteristic of 18th-century manuscript style.













